



# Partner Venues List

---

food&desire

Melbourne CBD  
Inner Melbourne  
Parks & Gardens  
Town Halls  
Bayside  
Hobsons Bay  
Regional Victoria





# Melbourne CBD

# 524 Flinders

---

## MELBOURNE CBD

Located in the heart of Melbourne CBD, 524 Flinders is a beautifully unique warehouse space, offering the perfect blank canvas for your next event. The venue offers a large undercover courtyard (75m<sup>2</sup>), where guests can enjoy a drink overlooking Flinders Street.

A catering preparation room, roller door access and loading bays are available at the venue.

## Capacities



270 Cocktail Capacity



130 Seated Capacity

524 Flinders Street, Melbourne





# Richmond Rowing Club

---

## MELBOURNE CBD

recently renovated transformed club boathouse is a stunning venue on the south bank of the Yarra River in Melbourne. Situated opposite Federation Square, nearby the Arts Centre.

It features indoor and outdoor entertainment areas, both with unrivalled views of the city. Situated above the rowing sheds, the event space flows onto the terrace and allows for both formal and informal events.

## Capacities

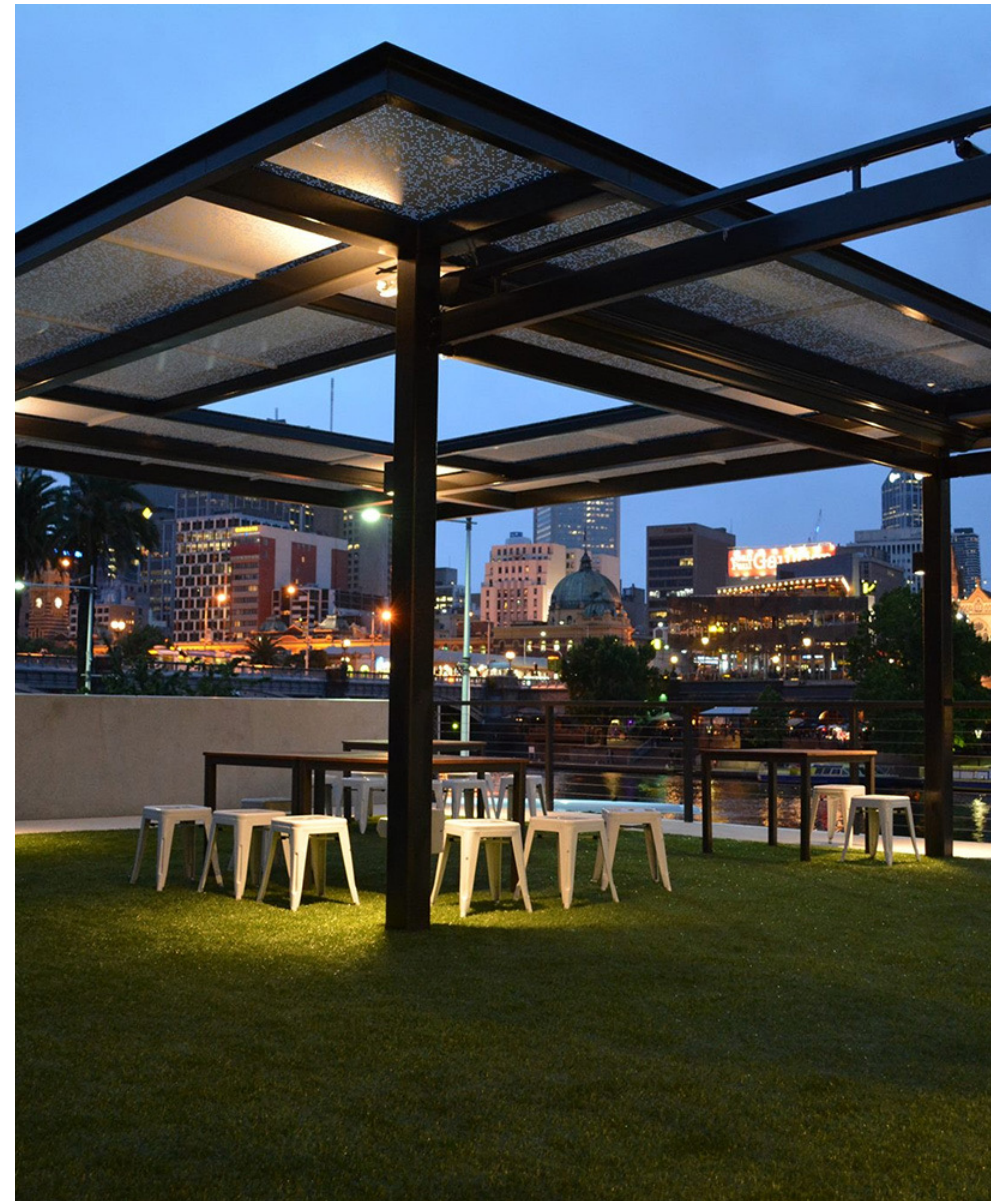


180 Cocktail Capacity



120 Seated Capacity

7 Boathouse Drive, Melbourne



# Blender Studios

---

## MELBOURNE CBD

Located a short walk south of the Queen Victoria Markets and west of Flagstaff Gardens, Blender Studios is the CBD's oldest warehouse art studio, and ideal for events ranging from pop-up shops and exhibitions to campaign launches and corporate functions.

Spaces available include a shopfront gallery space with projection capabilities, an event space surrounded by artist workspaces and one of Melbourne's most colourful, art filled laneways. Unfortunately the venue does not permit 18th or 21st birthday parties.

## Capacities



250 Cocktail Capacity

110 Franklin Street, Melbourne





# Buxton Contemporary

## SOUTHBANK

Buxton Contemporary Art Gallery is located at the University of Melbourne's Southbank campus.

The gallery and cozy courtyard is yours for the duration of your event whilst experiencing some of the country's best contemporary art. Exhibitions vary throughout the year, in a unique modern setting.

## Capacities

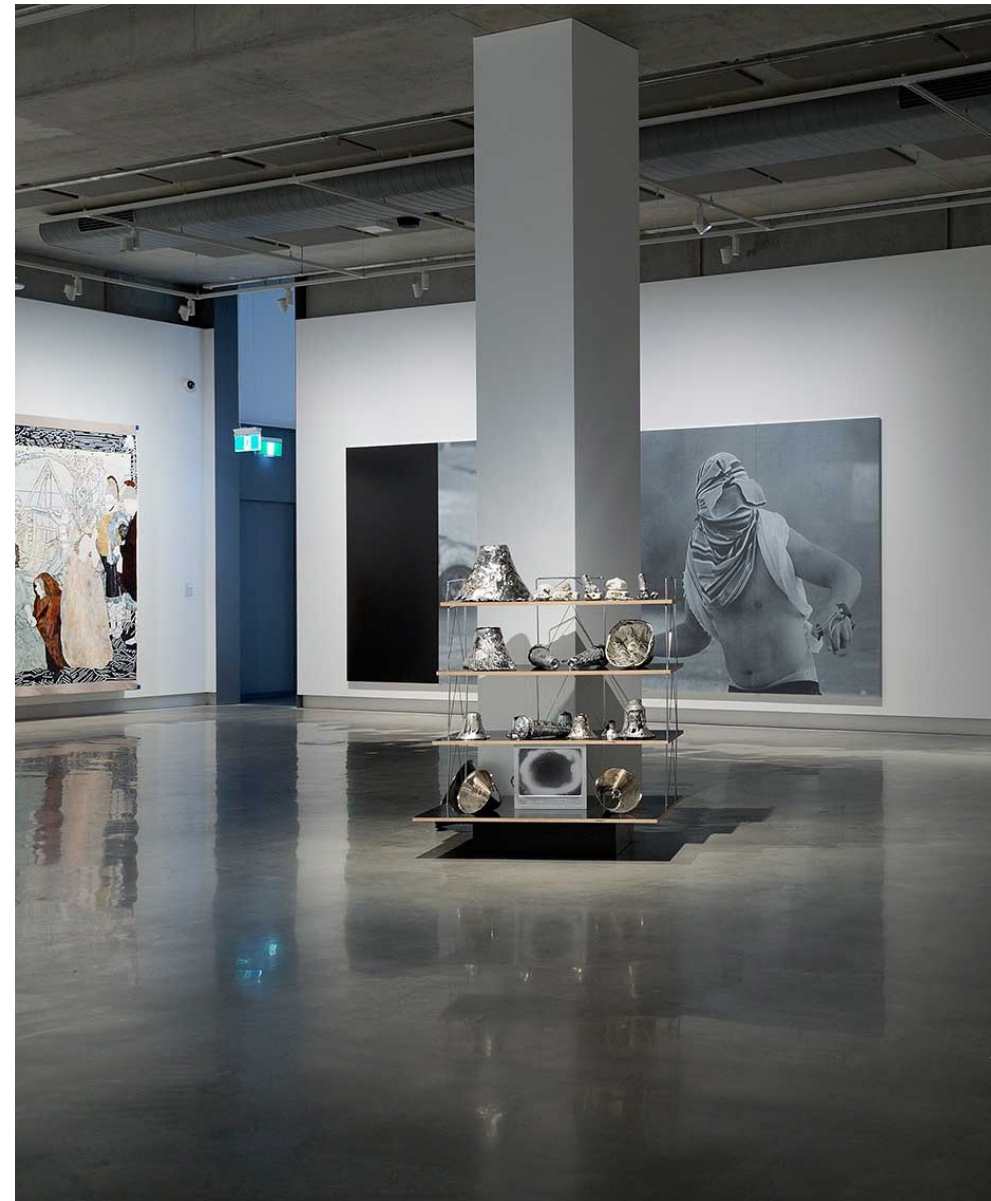


130 Cocktail Capacity (Courtyard, Foyer, Heritage Room)



80 Seated Capacity (Education Space – Upstairs)

Cnr Southbank Boulevard & Dodds Street, Southbank





Inner Melbourne





# Dutton Garage

---

## RICHMOND

A hidden gem in the most unsuspecting of places, this extraordinary event space is within a prestige car dealership, specializing in luxury, performance and collectable car sales by day and event space by night.

This exceptional venue is a moody basement event space rife with bohemian charm, including exposed brick walls, exposed trusses. An upstairs open air garage, is the ideal pre-dinner cocktail area. All reservations are subject to venue approval.

## Capacities



150 Cocktail Capacity



100 Seated Capacity

41 Madden Grove, Richmond



# Canvas House

---

## SOUTH MELBOURNE

Set over 620sq this warehouse space has recently undergone magnificent renovations, a design to provide a distinctive and beautiful experience.

The building itself holds a wealth of history, it has said to have been around for over 100 years, having uncovered original bluestone pavers during renovations. Unlike most warehouses, this warehouse creates a sense of warmth, with beautifully exposed brick walls, high ceilings, exposed trusses and polished concrete floor.

## Capacities



300 Cocktail Capacity



200 Seated Capacity (with Dancefloor)

1-137 Buckhurst Street, South Melbourne





# Cubes 3121

---

## CREMORNE

A brand new industrial chic event space, features polished concrete floor, exposed brick and timber paneled walls with plenty of natural light through windows down the length of the event space.

With 170sqm including a stage, dimmable lighting, connected kitchen facilities, connected breakout boardroom and dedicated high speed wifi network, the event space is ideal for workshops, team meetings, presentations, briefings, private parties and product launches.

## Capacities



150 Cocktail Capacity



90 Seated Capacity

534 Church Street, Cremorne



# Blondes Garage

---

## WINDSOR

Blondes Garage is a wildly versatile event and art space offering an eclectic mix of creativity and functionality. More than just a studio, with raw sophistication reminiscent of a New York City Loft, Blondes Garage emanates warmth and intimacy, creating the perfect backdrop for your next event.

With distressed concrete floors and crisp white walls, the studio's open plan space allows for a wide range of personalisation depending on your desired style.

## Capacities



100 Cocktail Capacity



50 Seated Capacity

Level 1, 62 Chapel Street, Windsor





# Sol & Luna

---

## PORT MELBOURNE

Sol rooftop, perched 16 floors high atop the PM building in Port Melbourne, featuring an infinity pool along with spectacular sweeping vistas of Melbourne and Port Phillip Bay.

An idyllic setting to soak up the sun and atmosphere while enjoying impeccably fresh cocktails. Sol rooftop can be hired exclusively or paired together with its sister rooftop venue Luna, just a few steps down.

## Capacities



150 Cocktail Capacity



80 Seated Capacity

**Rooftop, 300 Plummer Street, Port Melbourne**



# Gather & Tailor

---

## WEST MELBOURNE

Gather & Tailor is a unique warehouse venue space located only 5km from the CBD in West Melbourne. An essentially blank canvas with beautiful details, the space can be tailored to create a unique experience for any event.

Unrestricted by residential zoning, the warehouse operating hours are flexible and tailored to each event with ample off street parking also available.

## Capacities



300 Cocktail Capacity



150 Seated Capacity

4/41-59 Sims Street, West Melbourne





# Glasshaus

---

## CREMORNE

Industrial chic meets botanical splendour, with plants draping off the walls in a modern take on the Gardens of Babylon.

Showered in natural light and impeccably styled, this 1920s warehouse provides the perfect backdrop for your next event. Furniture, AV equipment, security and catering facilities can be provided by the venue.

## Capacities



95 Cocktail Capacity



85 Seated Capacity

**44 Cremorne Street, Cremorne**



# Starward Distillery

---

## PORT MELBOURNE

Within walking distance from the CBD, you will find the Starward whisky distillery filled with shiny equipment, old wine barrels and concrete floors.

It's design sets the scene for a unique industrial event space, with a large open bar in the centre to create an approachable and flexible setting. The distillery can be transformed into a cocktail or seated event, perfect for any type of function.

## Capacities



250 Cocktail Capacity



180 Seated Capacity

50 Bertie Street, Port Melbourne





# Le Ciel Events

---

## CREMORNE

Whether it's a workshop, presentation, or a corporate lunch – Le Ciel will take your work function to the next level. Seated or standing, your colleagues will marvel at the view and atmosphere. With a dynamic layout and plenty of opportunity for creativity – no two events are the same at Le Ciel.

## Capacities

### Level 6



180 Cocktail Capacity



48 Seated Capacity

### Level 7



120 Cocktail Capacity



100 Seated Capacity

6/13 Cremorne Street, Cremorne



# Timberyard

---

## PORT MELBOURNE

The Timber Yard is built on the philosophy of recycling, up cycling and bringing people together for amazing events.

Located on 6,000 sqm, comprised of indoor and outdoor space, in the Port Melbourne industrial precinct, The site has been restored remaining true to its heritage of second-hand timber storage and fabrication. The Timber Yard is an urban sanctuary designed to bring the flavour and personality of the country into the city.

## Capacities



1,500 Cocktail Capacity



700 Seated Capacity

351 Plummer Street, Port Melbourne





# Woolmill

---

## BRUNSWICK EAST

This brand new venue has been transformed from one of Melbourne's oldest Wool Mills to an all inclusive venue. Managed by an experienced event team, Nudo offers a wedding package at a price for everyone.

The industrial raw venue features exposed white brick walls, concrete floors and soaring ceiling beams. Individual dedicated spaces for each element of your event are available including a ceremony space, reception area, cocktail lounge and speakeasy bar area.

## Capacities



200 Cocktail Capacity



200 Seated Capacity

161 Donald Street, Brunswick East



# Melbourne Pavilion

---

## KENSINGTON

Set in a magnificent fully renovated and heritage listed art deco building at the edge of Melbourne's CBD. Its stunning design is centred around its soaring and elegant freestanding timber ceiling arches, the last remaining example of this original architectural construction in Australia. The Melbourne Pavilion is a truly remarkable event space, offering a voluminous space for large corporate functions or a uniquely intimate surround to celebrate your special occasion.

## Capacities



1,300 Cocktail Capacity



700 Seated Capacity

135-157 Racecourse Road, Kensington





# Middle Park Bowling Club

---

## MIDDLE PARK

With its unique sized layout, comprising in two different spaces being, the Main Clubroom and Function Room, The Middle Park Bowling Club is a fantastic venue for many different types of events such as corporate or private parties, conferences and training days, product launches, birthday and engagement parties, fundraising events and Hens & Bucks Parties. The club has amazing views of the city in a relaxing park setting.

## Capacities

### Main Clubroom



300 Cocktail Capacity



100 Seated Capacity

### Function Room



80 Cocktail Capacity



40 Seated Capacity

Canterbury Rd, Melbourne



# Fior

---

## PARKVILLE

Fior is a contemporary take on a traditional wedding venue and all about value for money. Through its unique design, Fior presents a timeless space, but also one that commands attention; maintaining an elegant sense of style that doesn't shy away from impact.

The sheer beauty of this venue is an assault on the senses. It is, quite literally, breathtaking and the absolute epitome of romance.

## Capacities



800 Cocktail Capacity



800 Seated Capacity

476 Brunswick Rd, Parkville VIC 3052





# Plume Gallery

---

## SOUTH MELBOURNE

One of the oldest reclaimed warehouses in South Melbourne has been beautifully transformed. Plume Gallery is an open-plan space that surrounds you with carefully curated contemporary artworks.

A perfect balance of uncomplicated simplicity and alluring visual delight. The gallery occupies airy spaciousness yet it retains a cosy ambience. Plume Gallery is a unique and sophisticated space sure to be remembered long after your event.

## Capacities



180-200 Cocktail Capacity



86 Seated Capacity

3-7 Albert Pl, South Melbourne VIC 3205





# Parks & Gardens



# Parks & Gardens

---

## MELBOURNE

If you decide to hold your wedding or event in one of Melbourne's parks or gardens, you may need to make a booking and apply for a wedding permit.

Some garden locations demand early application to council to ensure permit times in the busy season. Please let us know if we can assist you with your enquiry.



# Alexandra Gardens

---

## MELBOURNE

On the south bank of the Yarra River, the Alexandra Gardens connect to Kings Domain, the Domain parklands and the landscaped Royal Botanic Gardens.

First laid out in 1904, the gardens' most notable feature is the line of historic rowing boathouses lining the Yarra River. With its riverfront barbeques and beautiful view of the Yarra, Alexandra Gardens make the ideal venue for alfresco office parties and casual private functions.





# Birrarung Marr

---

## MELBOURNE

Birrarung Marr is an inner-city park between the Melbourne CBD and the Yarra River. Wide, open spaces and large, sculptured terraces

have been specially designed to host some of Melbourne's best events and festivals throughout the year and a theatre-like space at the river's edge will easily accommodate large crowds.

The tops of these terraces give way to spectacular views of the City, Southbank, Domain and the Yarra River.





# Fitzroy Gardens

---

## EAST MELBOURNE

Visited by over 2 million local, interstate and international guests each year, Fitzroy Gardens is one of the major attractions in Melbourne, playing host to hundreds of garden weddings and events throughout the year.

Sheltered structures such as The Old Bandstand, The Temple of the Winds, The Dolphin Fountain and The Conservatory have long been favourite backdrops for wedding ceremonies.

The Gardens are a 15 minute walk from Federation Square, with ample paid off street parking and tram stops nearby.





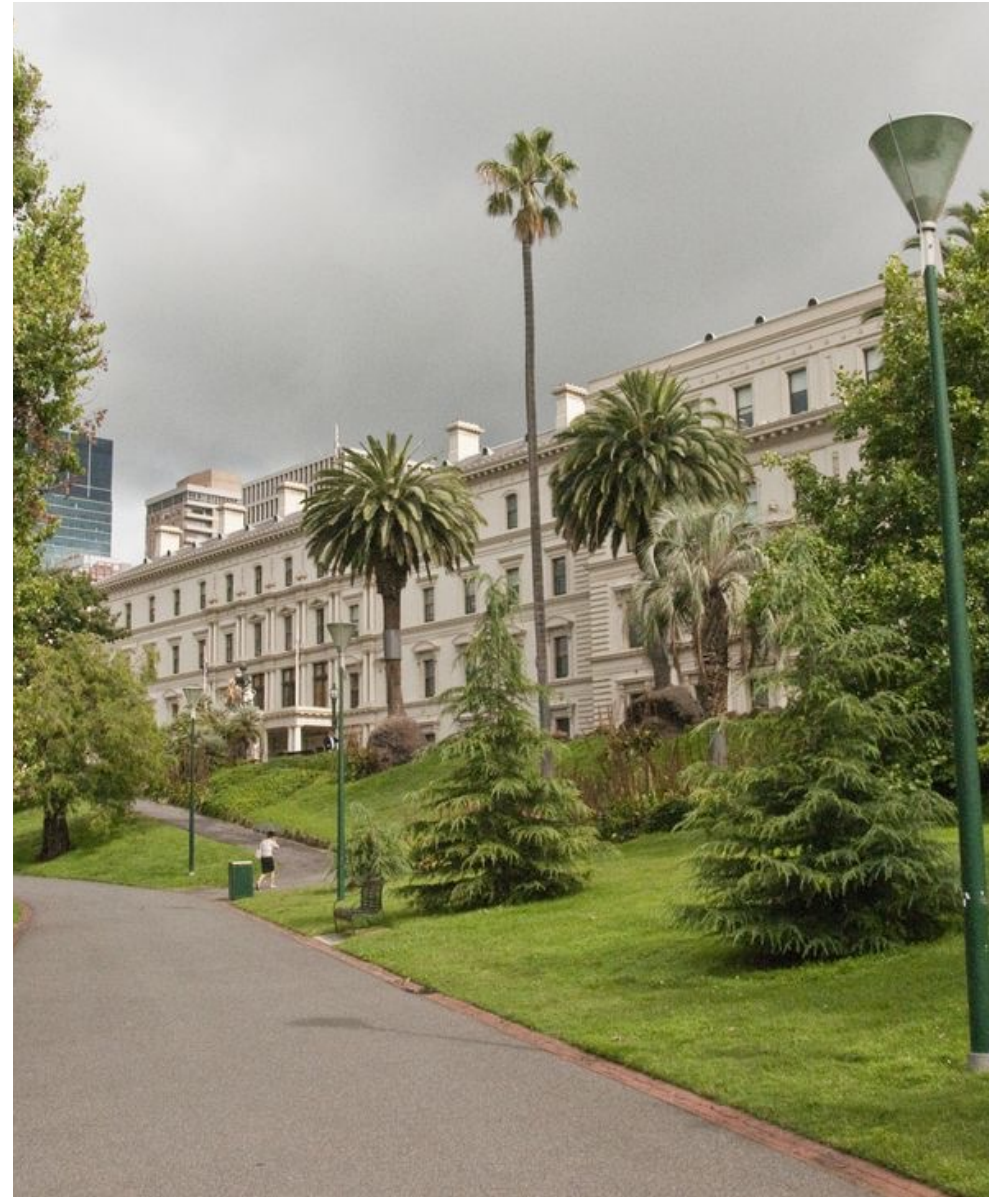
# Treasury Gardens

---

## EAST MELBOURNE

The Treasury Gardens provide a tranquil green edge to Spring Street and are a picturesque segue to the Fitzroy Gardens, just over Lansdowne Street. Along with the JFK Memorial and pond, is a beautiful fountain that acts as a popular backdrop for wedding photographs.

Across from Fitzroy Gardens Observatory, is the bluestone-paved location which lends itself to generous guest numbers for a garden wedding ceremony and/or post ceremony beverages. The afternoon sun can radiate heat from the paving but the surrounding trees provide some shade over the ceremony.







Town Halls





# Malvern Town Hall

---

## MALVERN

Located in the heart of Stonington, Malvern Town Hall is an outstanding example of Renaissance Revival style architecture.

Enter the building via a drive up portico and step into the foyer where you will be greeted with immaculately kept terrazzo floors and a grand marble staircase. The Main Hall boasts a high roof with coffered ceiling painted eggshell blue that is brilliantly lit by hanging chandeliers, a large stage, dress circle and parquet floors.

## Capacities



600 Cocktail Capacity



550 Theatre Capacity/360 Banquet Capacity

1251 High St, Malvern



# St Kilda Town Hall

---

First opened in 1887, the Collingwood Town Hall boasts impressive 19th century gold rush style classical design. The centerpiece of this grand building is its ballroom which is ideal for theatre performances, musical productions and large functions. A minimum of eight weeks is preferred for all potential bookings. AV equipment and commercial kitchen is available for hire.

## Capacities

### Auditorium



1,000 Cocktail Capacity



500 Seated Capacity

### Balcony



300 Cocktail Capacity

99a Carlisle Street, St Kilda





# Collingwood Town Hall

---

First opened in 1887, the Collingwood Town Hall boasts impressive 19th century gold rush style classical design. The centerpiece of this grand building is its ballroom which is ideal for theatre performances, musical productions and large functions. A minimum of eight weeks is preferred for all potential bookings. AV equipment and commercial kitchen is available for hire.

## Capacities

### Ballroom



800 Cocktail Capacity



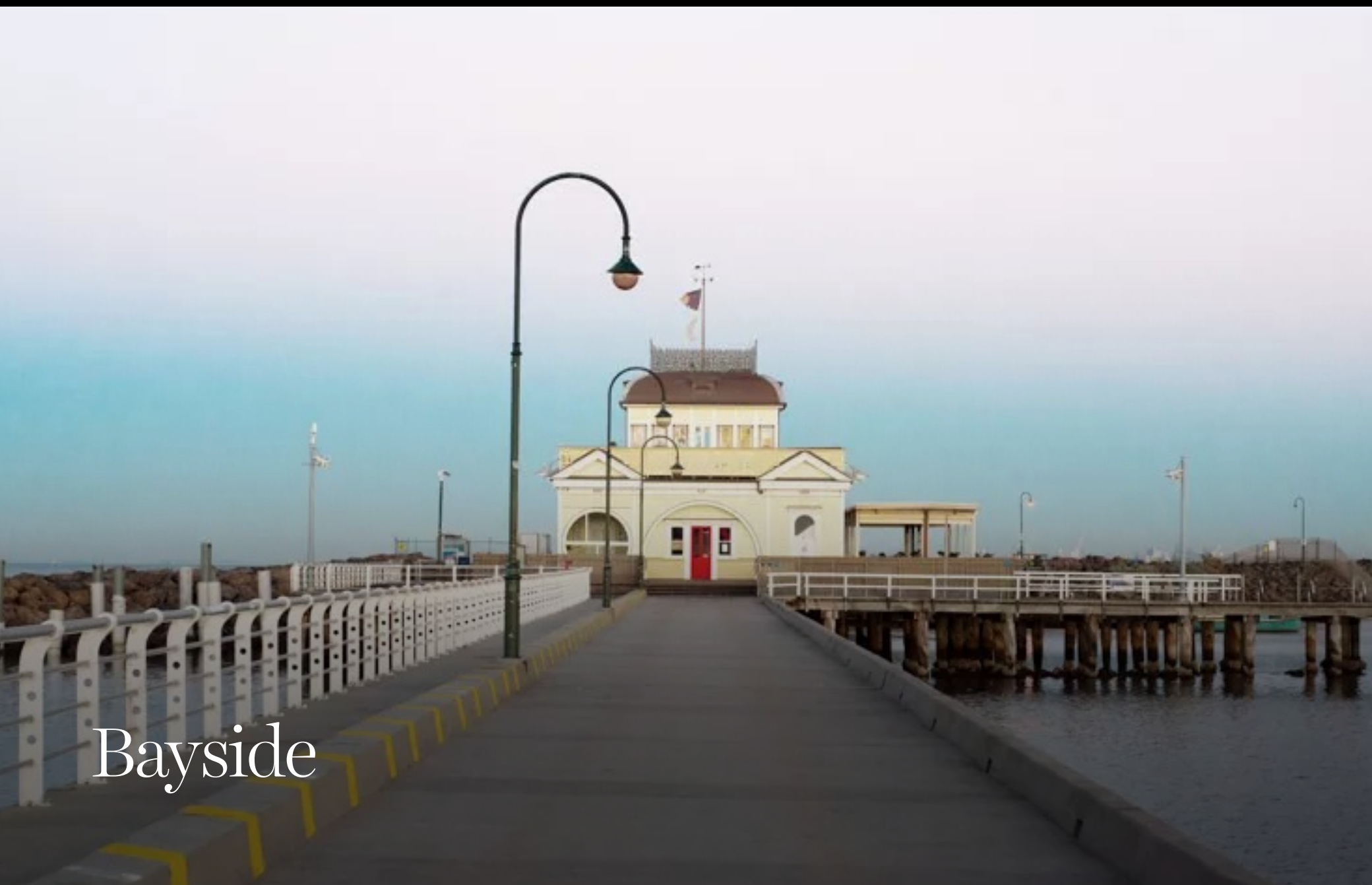
500 Seated Capacity

### Balcony



300 Cocktail Capacity

**99a Carlisle Street, St Kilda**



Bayside



# Palais Theatre

---

## ST KILDA

Palais Theatre is a multi faceted venue located in the heart of St Kilda. Primarily known for its live entertainment and grand theatre, it's versatility also lends itself to hosting private and corporate events on their stage and mezzanine.

## Capacities

### Stage



200 Seated Capacity

### Mezzanine



300 Cocktail Capacity



100 Seated Capacity

Lower Esplanade, St Kilda



# Daylight Studios

---

## ST KILDA

Daylight Studios is Melbourne's premier studio and equipment hire facility. Located only a few kms from the CBD, the large, naturally lit studios provide the perfect blank canvas for a range of events.

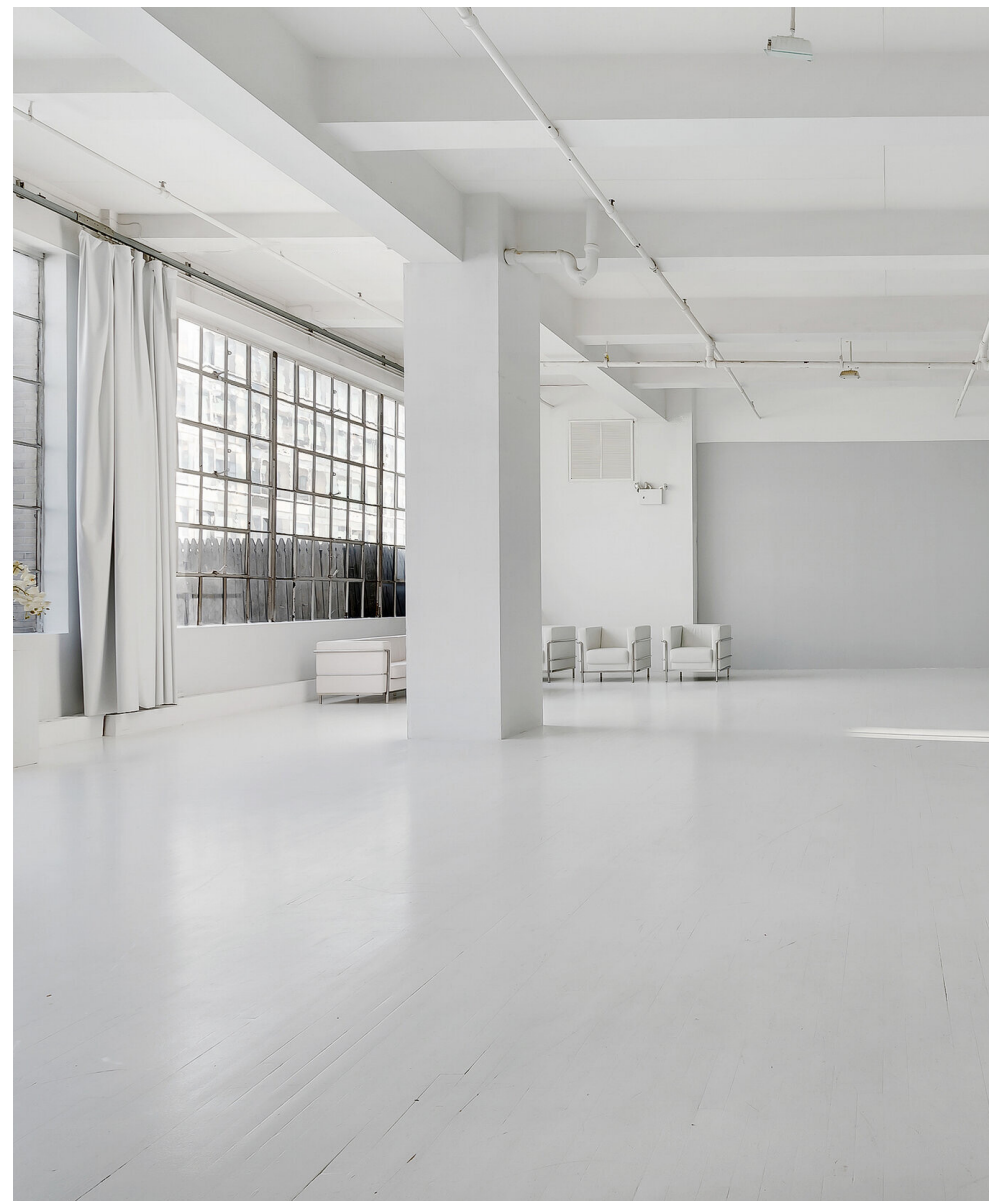
There is a large, free carpark at the rear of the studio with additional spaces at the studio available, if requested.

## Capacities



150 Cocktail Capacity

122 Chapel Street, St Kilda





# Westbeach Bathers Pavillion

---

## ST KILDA WEST

West Beach Bathers Pavilion was built in the 20s as a hub for Melbourne's colorful and burgeoning bathing population. The venue offer multiple spaces which can be transformed to suit your event nature and guest size, including the Grand Beach Hall which has panoramic bay views, The Gallery with its own wood fire and the Tearoom which has direct access to the beach.

## Capacities

### The Grand Beach Hall



250 Cocktail Capacity



220 Seated Capacity

### The Gallery



110 Cocktail Capacity



80 Seated Capacity

### The Tearoom

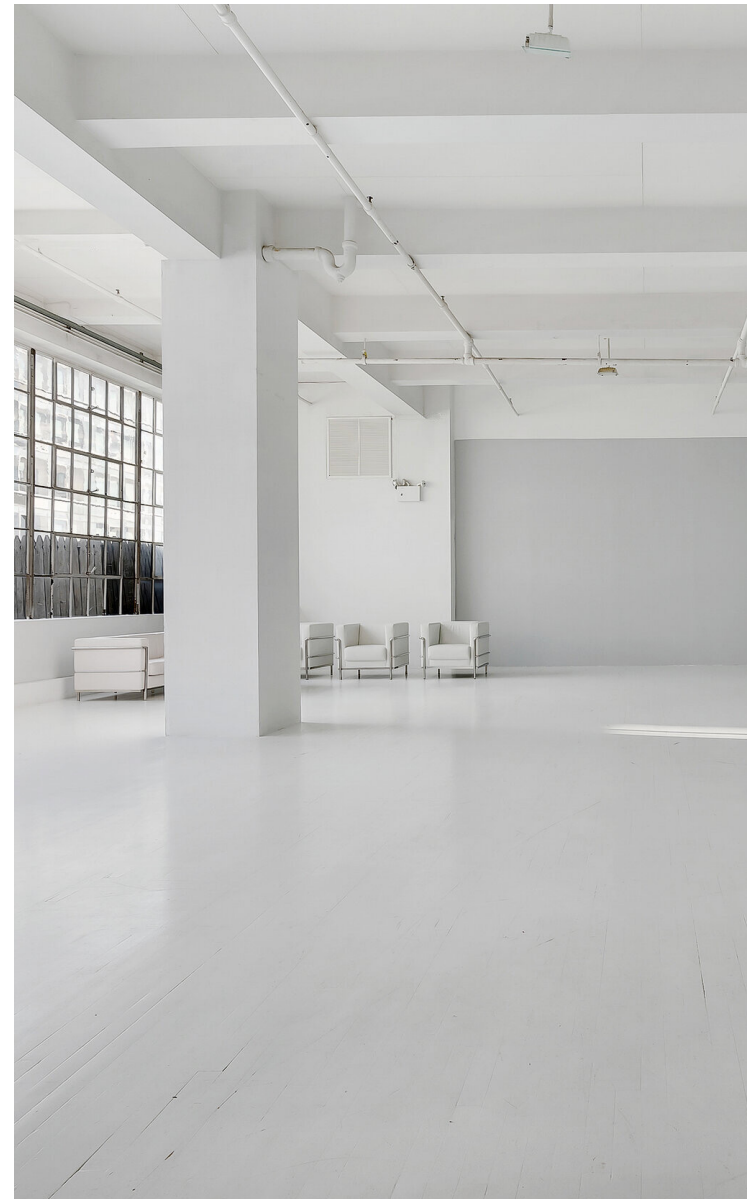


50 Cocktail Capacity



40 Seated Capacity

122 Chapel Street, St Kilda



# Elwood Sailing Club

---

## ELWOOD

Elwood Sailing Club is a unique and inspiring venue; conveniently located, well-appointed and offering uninterrupted views of the foreshore and bay.

A huge deck area with bar service. A stunning, affordable secret on the beach

## Capacities



220 Cocktail Capacity



150 Seated Capacity

5 Elwood Foreshore Elwood







# Hobsons Bay





# Little Ginger

---

## WILLIAMSTOWN NORTH

Little Ginger is a black canvas waiting for you to set it up however you want. Enjoy use of the function room, breakout areas, outdoor space and furniture.

With a focus on creativity, imagination and engaging with others, inside offers a polished concrete industrial look, high ceilings in one area, a second area with synthetic grass against white walls and overhead pergola.

## Capacities



100 Cocktail Capacity



80 Seated Capacity

4/10 Akuna Drive, Williamstown North





# Seaworks

---

## WILLIAMSTOWN NORTH

Seaworks is one of Melbourne's largest venues located just 15 minutes away from the CBD. The warehouse offers an open space with high industrial roof lines, a Mezzanine on Level 1 and a combination of indoor and outdoor areas offering spectacular views of Melbourne's skyline and Port Phillip bay.

The venue space can be divided into sections for hosting versatile events from exhibitions, automotive shows to large weddings.

### Capacities



1,460 Cocktail Capacity



1,584 Seated Capacity

82 Nelson Place, Williamstown



# The Substation

---

## NEWPORT

The Substation is one of Melbourne's most exciting, historical and exclusive events spaces. As a modern warehouse space, with large ornate windows, the venue lends itself to limitless creative opportunities and is perfect for an industrial style wedding, corporate or private event.

## Capacities



80-200 Weddings



200-400 Corporate Events

82 Nelson Place, Williamstown





Regional Victoria



# The Barn

---

## WALLINGTON

The Barn is a beautiful farm shed situated a stone's throw away from Geelong. Tucked away peacefully amongst tall blue gums, its rustic charm offers the perfect space for destination weddings and celebrations. There are 30 acres to choose from for wedding ceremonies and sunset photo opportunities.

The venue comes with a generous range of vintage and rustic furniture, dining tables, chairs and bar trees.

## Capacities



150 Cocktail Capacity



100 Seated Capacity

30 Hardings Road, Wallington





# Butterland

---

## NEWSTEAD

Butterland is a unique, relaxed country venue that offers an extraordinarily beautiful setting in which to celebrate. Owners Greg and Katie run their own furniture making & floristry workshops and also make the space available for wedding and function hire or photographic and film use.

The surrounding grounds are incredibly picturesque, set on an acre of land and garden with several veggie patches, plenty of fruit trees and a spacious lawn area.

## Capacities



200 Cocktail Capacity



150 Seated Capacity

2-4 Tivey Street, Newstead



# Bramleigh Estate

---

## WARRANDYTE

Bramleigh Estate is a luxury wedding and events venue situated in the natural landscapes of Warrandyte. Surrounded by bushland and the Yarra River, the location offers endless beautiful photo opportunities for your wedding and event.

The venue is complimented for it's ambient Hampton inspired feel, with natural light, exposed beams and tasteful white interior furnishings.

## Capacities

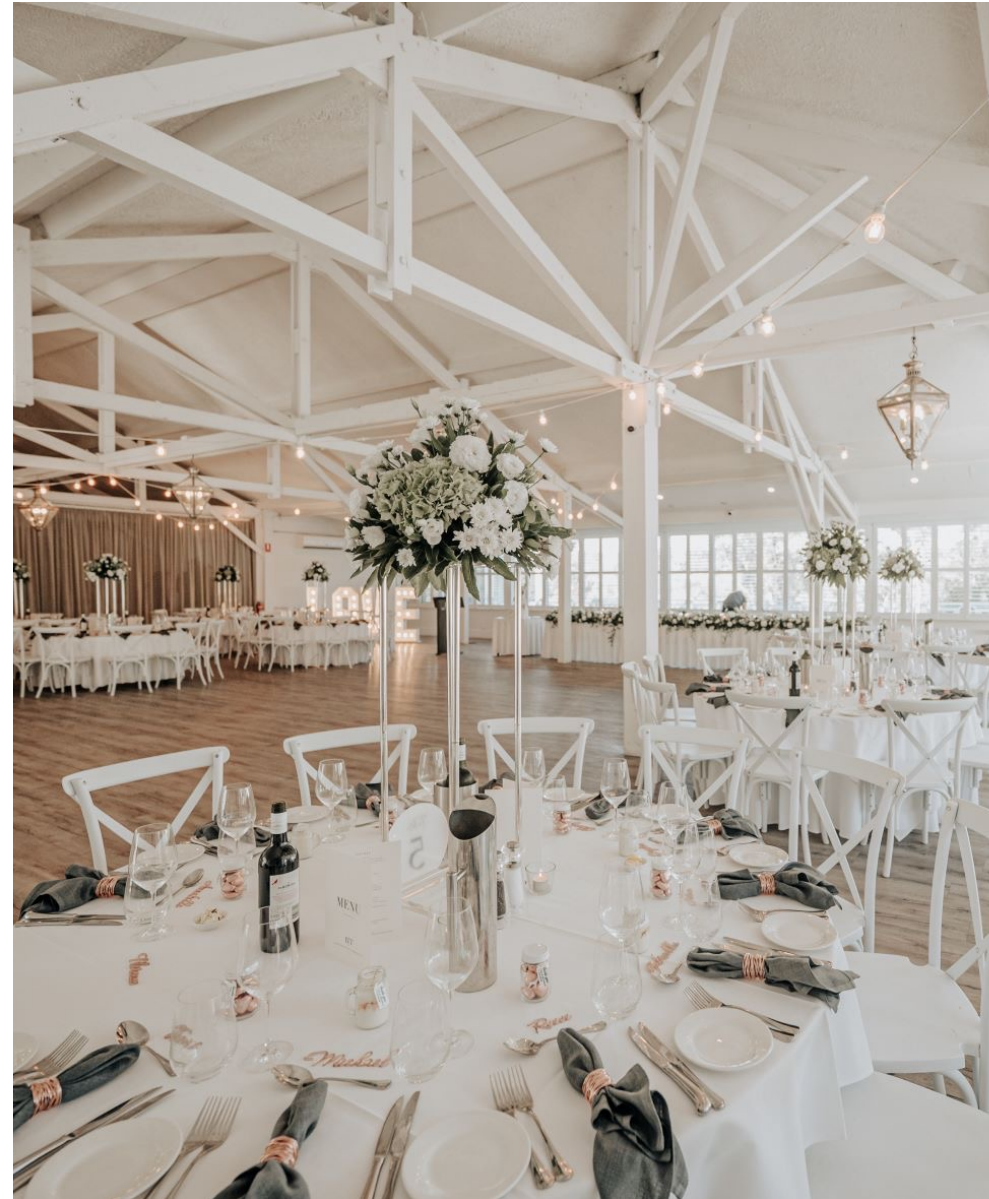


350 Cocktail Capacity



240 Seated Capacity

420 Ringwood-Warrandyte Road, Warrandyte





# Wandin Park Estate

---

## WANDIN NORTH

Wandin Park Estate is a 320-acre property, situated less than an hour drive from Melbourne. It's diverse landscape includes rolling green pastures, bush, sandy area and a flat manicured lawn area. With a beautiful and versatile venue, it allows you to tailor your day exactly to your desires.

## Capacities



200 Cocktail Capacity



200 Seated Capacity

305 Victoria Road, Wandin North



# Swallowfield Vineyards

---

## GEMBROOK

A family owned boutique vineyard on 150 acres in the picturesque Yarra Valley, located just over one hour from Melbourne CBD, Swallowfield is the perfect backdrop for your event.

The property is home to two ornamental lakes, a pine forest, rolling fields and the vineyard, your event can be held under oak trees overlooking the beautiful water feature, in the pine forest or even in the winery.

## Capacities



130 Cocktail Capacity



100 Seated Capacity

Swallowfield Road, Gembrook







catering

114 Munro Street  
South Melbourne 3205

*Carousel*

22 Aughtie Drive  
Albert Park Lake 3206

HARBOUR  
ROOM

2 Pier Road  
St Kilda 3182

Half Acre

112 Munro Street  
South Melbourne 3205

CITYFIELDS

1341 Dandenong Rd,  
Chadstone 3148

03 8646 6000 | [info@foodanddesire.com.au](mailto:info@foodanddesire.com.au) | [foodanddesire.com.au](http://foodanddesire.com.au)

food&desire